


REGISTER YOUR PRODUCT: / ENREGISTREZ VOTRE PRODUIT : / REGISTRE SU PRODUCTO:



Scan QR code to register your product.
Lisez ce code QR pour enregistrer votre produit.
Escanee el código QR para registrar su producto.

 bullytruckaccessories.com/registration

FOLLOW US: / RSUIVEZ-NOUS : / SÍGANOS:  @bullytruckaccessories



Your Complete Satisfaction is Our Number One Goal.

Your satisfaction is why we're in business. If for any reason your experience with our product was anything less than satisfactory, please reach out to us. We'd love to have the opportunity to provide the product experience and service you deserve.

Votre entière satisfaction constitue notre objectif principal.

Nous sommes en affaires pour assurer votre satisfaction. Si jamais, pour quelque raison que ce soit, votre expérience avec un de nos produits ne s'avère pas entièrement satisfaisante, n'hésitez pas à communiquer avec nous. Nous ne demandons pas mieux que d'avoir l'occasion de vous procurer l'expérience et le service auxquels vous avez droit.

Su completa satisfacción es nuestra meta número uno.

Su satisfacción es la razón por la que estamos en el negocio, sí por alguna razón su experiencia con nuestro producto no fue satisfactoria, comuníquese con nosotros, nos encantaría tener la oportunidad de brindarle la experiencia y el servicio que usted se merece.

TECHNICAL HELP*:

Toll Free: 1-800-237-7560

Email: customerservice@pilotautomotive.com

* Phone and customer service valid only in the USA

* Téléphone et service client valables uniquement aux USA

* Teléfono y servicio al cliente válidos sólo en E.U.A./ Phone and customer service valid only in the USA

BULLY HITCH STEP

Installation Instructions

MARCHEPIED D'ATTELAGE

Instructions d'installation

ESTRIBO BULLY

Manual de instalación

These instructions cover the following part numbers:
Ces instructions concernent les numéros de pièce ci-dessous:
Estas instrucciones aplican a los siguientes números de parte:

TBD BY FORD

IMPORTADO POR: ZONE COMPRA, S. DE R.L. DE C.V.,
AVE. GUERRERO, NO. 2911-B, COL. GUERRERO,
NUEVO LAREDO, TAMAULIPAS, MÉXICO C.P. 88240
R.F.C.: ZCO-980914-198, TEL.: (867) 719-2683

INDEX

ENGLISH

Installation Instructions 5

FRANÇAIS

Instructions d'installation 6

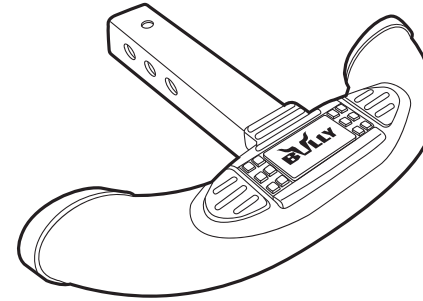
ESPAÑOL

Manual de instalación 7

TOOLS NEEDED (NOT INCLUDED):

- Protective gloves

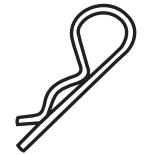
WHAT'S INCLUDED:



(x1)
Hitch Step



(x1)
Hitch pin



(x1)
Hitch pin clip

ENGLISH

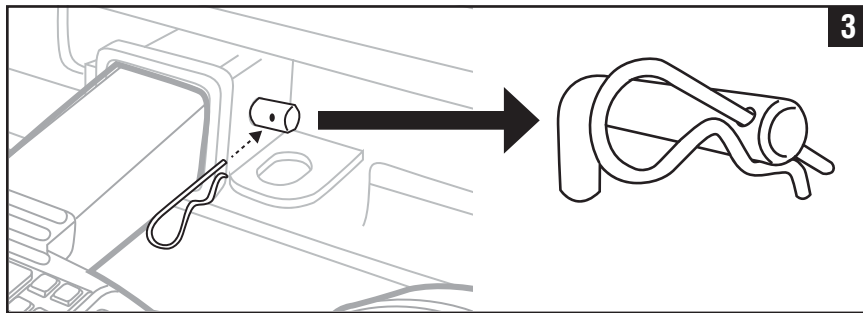
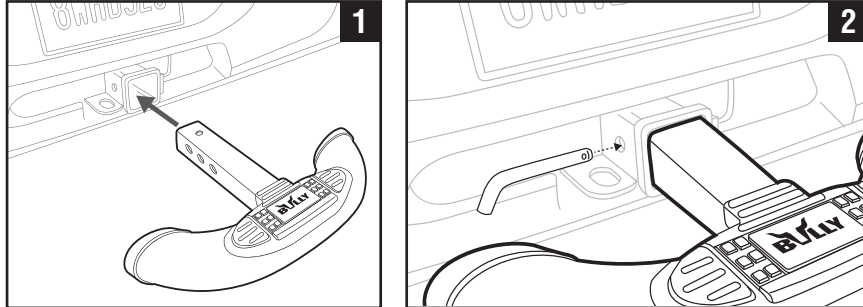
WARNING:

- * Before installing, read instructions completely and ensure they are understood.
- * Do not install this product on your vehicle if the vehicle's body metal is rusted or otherwise damaged.
- * Wear protective gloves during the install process.
- * Do not modify step or installation hardware. Install step following these instructions only.
- * If involved in any impact or accident, inspect hitch step for cracks or fractures prior to placing any load on them. If damaged, remove immediately and discard it.
- * Do not let children play on or around this product.
- * Do not stand on this product while vehicle is in motion.
- * Do not use any polishing products on step as you may slip and fall.
- * Do not tow using this product.
- * Do not exceed weight limit of 300lbs using this product.
- * Ensure product is secured before every use. Must use hitch pin to secure hitch step into place.

IMPORTANT: Pilot, Inc. / Bully assumes no liability for any damage or injury caused by customer's failure to adhere to the warnings and the directions in these instructions.

INSTALLATION INSTRUCTIONS:

1. Insert and align hitch step with the desired mounting hole on open hitch receiver.
2. Insert hitch pin into the mounting hole.
3. Insert hitch pin clip to securely lock hitch step into place.



5

FRANÇAIS

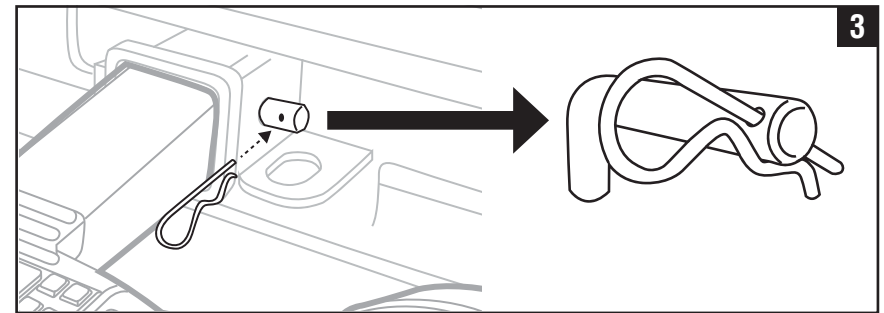
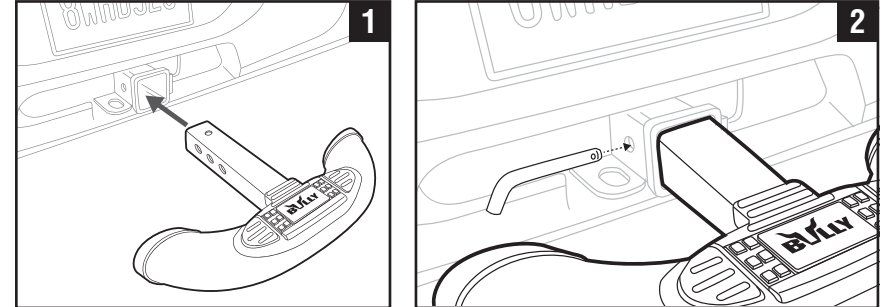
AVERTISSEMENT :

- * Before installing, read instructions completely and ensure they are understood.
- * Do not install this product on your vehicle if the vehicle's body metal is rusted or otherwise damaged.
- * Wear protective gloves during the install process.
- * Do not modify step or installation hardware. Install step following these instructions only.
- * If involved in any impact or accident, inspect hitch step for cracks or fractures prior to placing any load on them. If damaged, remove immediately and discard it.
- * Do not let children play on or around this product.
- * Do not stand on this product while vehicle is in motion.
- * Do not use any polishing products on step as you may slip and fall.
- * Do not tow using this product.
- * Do not exceed weight limit of 300lbs using this product.
- * Ensure product is secured before every use. Must use hitch pin to secure hitch step into place.

IMPORTANT: Pilot, Inc. / Bully assumes no liability for any damage or injury caused by customer's failure to adhere to the warnings and the directions in these instructions.

INSTRUCTIONS D'INSTALLATION

1. Insert and align hitch step with the desired mounting hole on open hitch receiver.
2. Insert hitch pin into the mounting hole.
3. Insert hitch pin clip to securely lock hitch step into place.



6

ESPAÑOL

WARNING:

- * Before installing, read instructions completely and ensure they are understood.
- * Do not install this product on your vehicle if the vehicle's body metal is rusted or otherwise damaged.
- * Wear protective gloves during the install process.
- * Do not modify step or installation hardware. Install step following these instructions only.
- * If involved in any impact or accident, inspect hitch step for cracks or fractures prior to placing any load on them. If damaged, remove immediately and discard it.
- * Do not let children play on or around this product.
- * Do not stand on this product while vehicle is in motion.
- * Do not use any polishing products on step as you may slip and fall.
- * Do not tow using this product.
- * Do not exceed weight limit of 300lbs using this product.
- * Ensure product is secured before every use. Must use hitch pin to secure hitch step into place.

IMPORTANT: Pilot, Inc. / Bully assumes no liability for any damage or injury caused by customer's failure to adhere to the warnings and the directions in these instructions.

INSTALLATION INSTRUCTIONS:

1. Insert and align hitch step with the desired mounting hole on open hitch receiver.
2. Insert hitch pin into the mounting hole.
3. Insert hitch pin clip to securely lock hitch step into place.

