

JBL BB4000 SOUNDBAR INSTALLATION INSTRUCTIONS

(Ford 3-Door VM2DZ-18808-J/Ford 5-Door VM2DZ-18808-K)

Only compatible with OE 6 speaker system, not compatible with premium or branded sound system

IMPORTANT: This quick-start guide contains information about assembling, mounting and connecting your JBL BB4000 Soundbar. For complete installation, connection, setup, and operation information, download the full JBL BB4000 Soundbar Installation Instructions at www.jbl.com.

WARNING: THE JBL BB4000 SOUNDBAR SHOULD ONLY BE INSTALLED IN THE LOCATION DESCRIBED IN THE INSTALLATION SHEET, WHICH IS IN THE CARGO COMPARTMENT AND AWAY FROM PASSENGER SEATING. FAILURE TO FOLLOW THE INSTALLATION INSTRUCTIONS COULD RESULT IN PERSONAL INJURY.

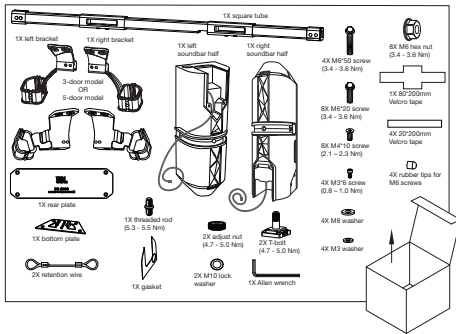
EN

WARNING: TO HELP AVOID PERSONAL INJURY, ALWAYS USE CAUTION WHEN IN REVERSE (R) OR CHANGING LANES. ALWAYS CHECK SURROUNDINGS AND INTERIOR AND EXTERIOR MIRRORS, AND USE REAR VIEW CAMERA AS AN AID.

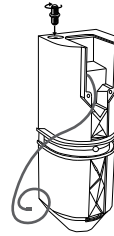
TABLE OF CONTENTS

I. What's in the box.....	2
II. Tools Required.....	2
III. Assembling the BB4000 soundbar.....	2
IV. Mounting the BB4000 soundbar to the vehicle.....	4
a. 5-DOOR with roof bow assembly mounting.....	4
V. Routing and plugging in the speaker wires.....	5
VI. Soundbar Flashing Steps.....	5
VII. Specifications.....	7
VIII. Warranty Card.....	8

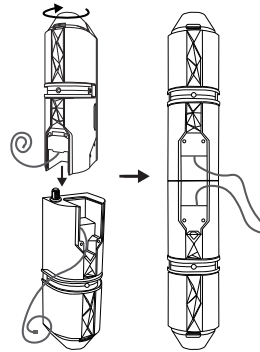
I. WHAT'S IN THE BOX



2. Screw the threaded rod into the threaded slot on the same half of the BB4000 Soundbar on which the gasket is applied. Hand-tighten only.



3. Screw the other side half of the BB4000 Soundbar onto the threaded rod in the half of BB4000 Soundbar on which the gasket is applied. When the half is seated in place, both halves should be aligned.



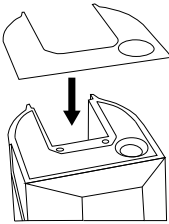
II. TOOLS REQUIRED

- 3/8" drive ratchet and extension
- Torque wrench
- 9mm and 10mm sockets
- T-25 Torx bit socket
- 9mm and 10mm wrenches
- Allen wrench (included)

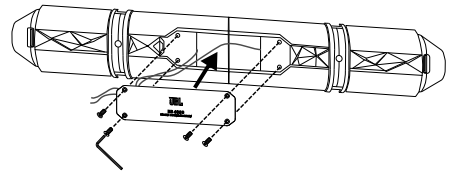
III. ASSEMBLING THE BB4000 SOUNDBAR

IMPORTANT: Place the BB4000 Soundbar on a soft surface in your work space to avoid scratching the exterior finish.

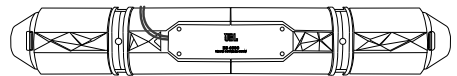
1. Apply the included gasket to the end panel of one of the speakers before assembling the Soundbar.



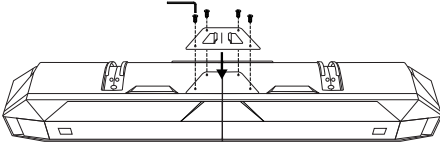
4. Secure the rear plate in place with four (4) M4*10 screws using the included Allen wrench. **NOTE:** Make sure the rear plate JBL logo is properly oriented before securing all screws.



Run the speaker cables out of the notch towards the driver's side of the BB4000 Soundbar and drape them over the front of the BB4000 Soundbar.

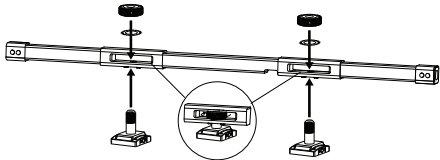


5. Turn the BB4000 Soundbar over and secure the bottom plate in place with four (4) M4*10 screws using the included Allen wrench.



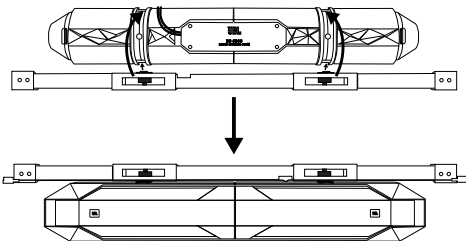
6. Place the adjustment nut and M10 lock washer in the square tube chamber. Insert the T-bolt into the adjustment nut from below the square tube. Turn the adjustment nut clockwise to tighten. Do this for both sides.

NOTE: Do not completely tighten the adjustment nuts. Leaving them a little loose will help to slide the T-bolts into the tracks on the back of the BB4000 Soundbar (see next step).

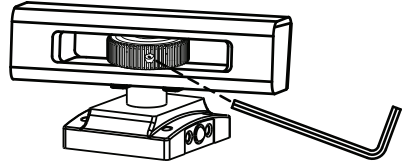


7. Take the square tube/T-bolt assembly to the BB4000 Soundbar. Slide the base of each T-bolt into the channels on the lower back of the BB4000 Soundbar. Slide the assembly up along the track for proper position.

NOTE: Make sure the notch on the square tube is over the driver's side of the BB4000 Soundbar. Place the notch over the speaker wire.

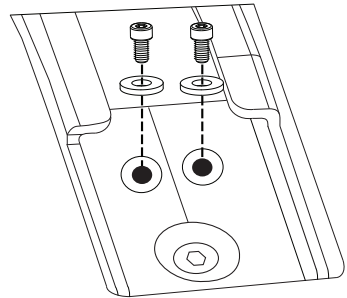


8. Use the included Allen wrench to tighten the adjustment nuts, by inserting into hole and prying the nuts and secure the square tube in place: turn clockwise to tighten down

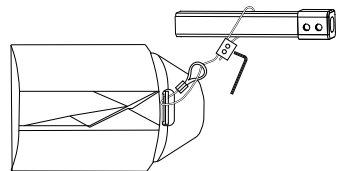


9. Install two (2) M3*6 screws and washers at the base of each T-bolt track on the back of the BB4000 Soundbar to prevent it from sliding off of the square tube.

IMPORTANT NOTE: These screws only prevent the BB4000 Soundbar from sliding off of the square tube when mounted. It is not recommended to secure the BB4000 Soundbar at this position.



10. For safety, install retention wires on either side of the BB4000 Soundbar. Thread the wire around the retention bracket on the BB4000 Soundbar, then through the fixed loop of the wire and through one side of the retention clamp. Wrap the end of the wire around the square tube, then thread the end into the other side of the retention clamp. Tighten the set screws in the clamp with the included Allen wrench to secure.

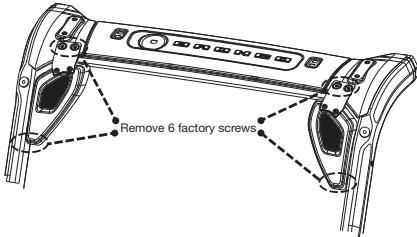


IV. MOUNTING THE BB4000 SOUNDBAR TO THE VEHICLE

The mounting process is the same for the **3-Door model** (VM2DZ-18808-J) and the **5-Door model** (VM2DZ-18808-K), with the exception of 5-Door models with the optional Roof Bow.

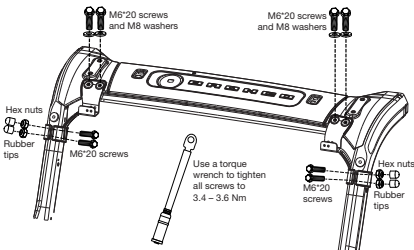
NOTE: It is best to have the assistance of at least one other person when mounting the BB4000 Soundbar in your Bronco.

1. Remove the factory Sport Bar speaker brackets by removing six (6) factory screws with a T-25 Torx bit – two each in the upper part of the brackets along the horizontal bar, and one each in the vertical bars. Disconnect the factory speaker connectors at the factory speakers by squeezing the tabs and pulling the connectors apart.



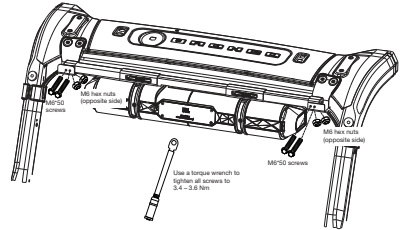
2. Open the clamps of the JBL BB4000 Soundbar brackets.
3. Place brackets onto the Sport Bar and secure in place with four (4) M6*20 bolts and four (4) M8 washers in the upper part of the brackets, along the horizontal bar.
4. Close the clamps around the vertical bars. Make sure the rubber gaskets remain inside the clamps. Secure the clamps with four (4) M6*20 bolts and four (4) M6 hex nuts. For safety, apply the rubber tips to the length of the screws that protrude beyond the hex nuts.

NOTE: Do not tighten the screws completely until after the full assembly is mounted in the brackets.



5. Carefully lift the BB4000 Soundbar/square tube assembly and place the square tube ends into the cradles of the mounting brackets. Then secure with four (4) M6*50 screws and four (4) M6 hex nuts – two (2) of each per side.

NOTE: Do not tighten the screws completely until the next step.

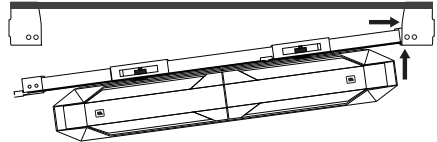


6. When all screws are in place and the assembly is secure, tighten all of them with a torque wrench to 3.4 – 3.6 Nm.

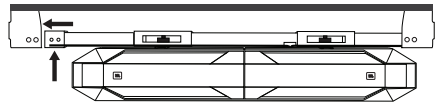
a. 5-DOOR WITH ROOF BOW ASSEMBLY MOUNTING

If your 5-Door Bronco has the optional Roof Bow, follow these steps to mount the BB4000 Soundbar assembly.

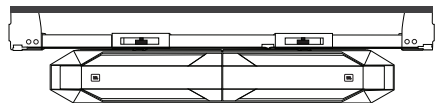
1. Tilt the BB4000 Soundbar/square tube assembly and insert the driver's side end of the tube into the mounting bracket. Slide all the way to the end of the bracket.



2. Raise up the passenger side end of the assembly and slide the end of the square tube into the mounting bracket.



3. Adjust the assembly position until the BB4000 Soundbar is centered in the vehicle and the screw holes of the square tube and the bracket are lined up. Secure with four (4) M6*50 screws and four (4) M6 hex nuts – see step 5 in the previous section.

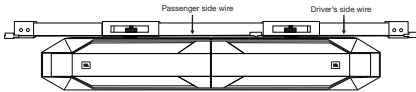


HARMAN International Industries,
Incorporated 8500 Balboa Boulevard,
Northridge, CA 91329 USA
www.jbl.com

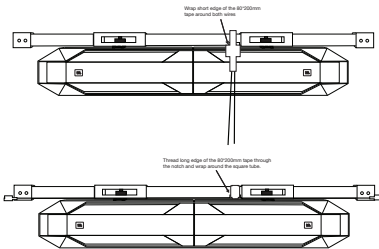
© 2021 HARMAN International Industries, Incorporated. All rights reserved. JBL is a trademark of HARMAN International Industries, Incorporated, registered in the United States and/or other countries. Features, specifications and appearance are subject to change without notice.

V. ROUTING AND PLUGGING IN THE SPEAKER WIRES

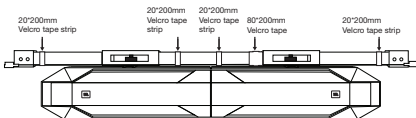
1. Route the speaker wires through the notch in the square tube according to the labels on the wires – “Driver’s Side” to the speaker connector on the driver’s side of the Bronco, “Passenger Side” to the speaker connector on the passenger side of the Bronco.



2. Wrap both wires with the short edge of the included 80”200mm Velcro tape. Next, thread the long edge of the 80”200mm tape through the notch and wrap around the square tube. This will secure the wires and prevent them from rubbing against the Soundbar.

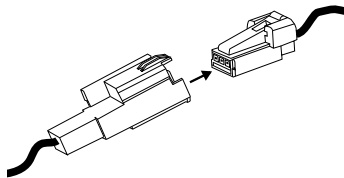


3. On the square tube, use the rest of the four (4) included 20”200mm Velcro tape strips to secure the wire to the square tube – wrap the strips around the tube.



NOTE: The JBL badges can be rotated if the Soundbar is placed facing the rear side of the vehicle.

4. Plug the BB4000 Soundbar speaker wire connectors into the factory speaker connectors.



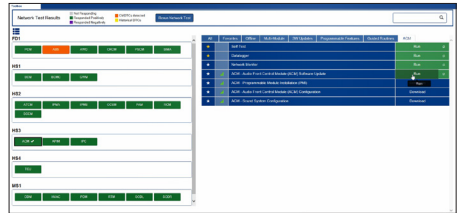
5. Turn on the sound and enjoy!

VI. SOUNDBAR FLASHING STEPS

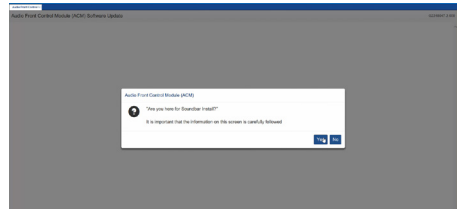
NOTE: Dealer must flash the soundbar in FDRS software ACM interface.

1. **Running “ACM - Audio Front Control Module (ACM) Software Update”.**

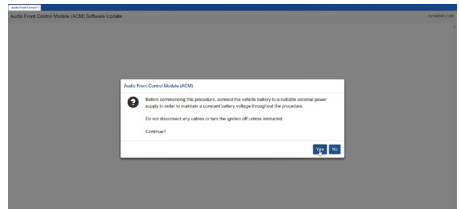
- 1.1 Go to ACM menu, left click “ACM - Audio Front Control Module (ACM) Software Update”.



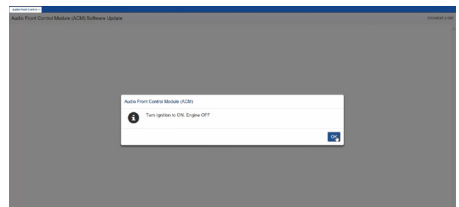
- 1.2 Click “Yes” to continue.



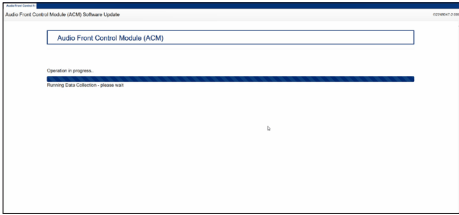
- 1.3 Click “Yes” to continue.



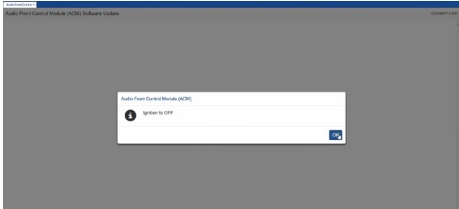
- 1.4 Click “OK” to start the software update.



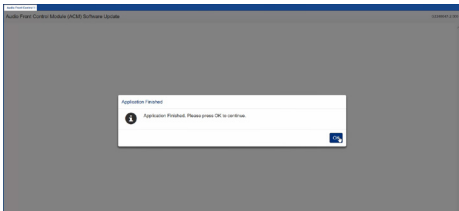
1.5 The ACM software update operation is running for around 5 minutes.



1.6 Click "OK" to continue.

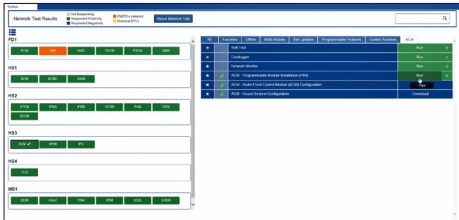


1.7 Click "OK" to continue. Note the "ACM – Audio Front Control Module (ACM) Software Update" application is successfully finished.

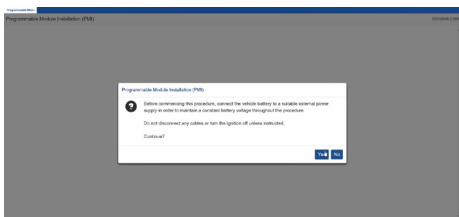


2. Running "ACM - Programmable Module Installation (PMI)"

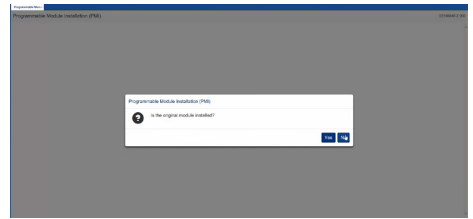
2.1 Left click "ACM - Programmable Module Installation (PMI)".



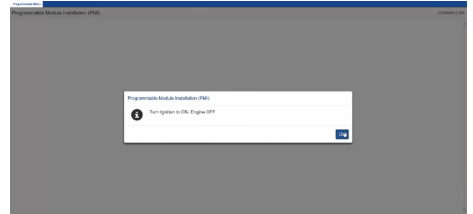
2.2 Click "Yes" to continue.



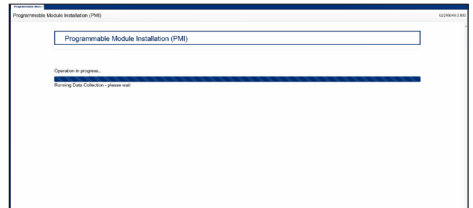
2.3 **IMPORTANT:** Click "No" to continue.



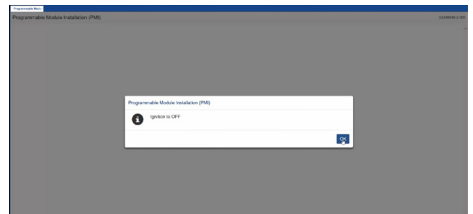
2.4 Click "OK" to continue.



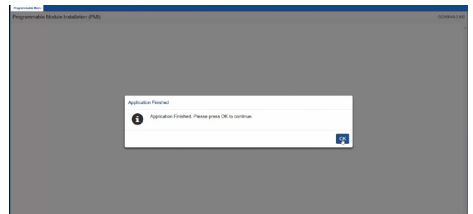
2.5 The PMI operation is running for around 5-10 minutes.



2.6 Click "OK" to continue.

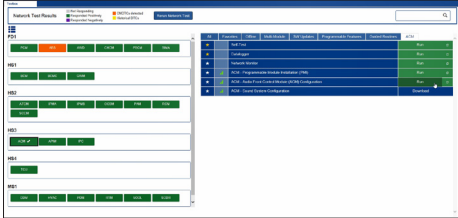


2.7 Click "OK" to continue. Note the "ACM - Programmable Module Installation (PMI)" application is successfully finished.

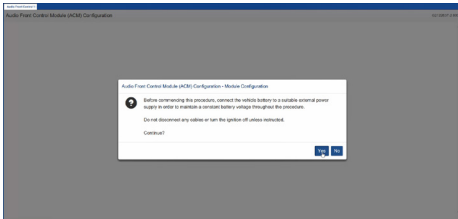


3. Running "ACM - Audio Front Control Module (ACM) Configuration"

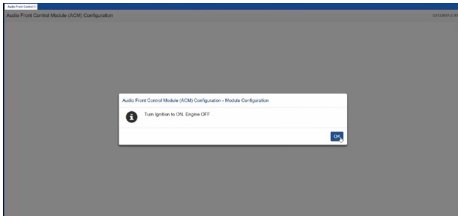
3.1 Left click "ACM - Audio Front Control Module (ACM) Configuration".



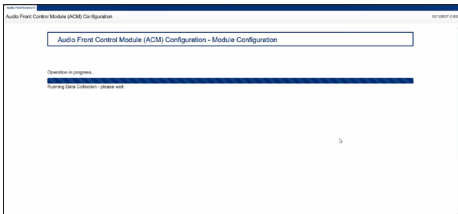
3.2 Click "Yes" to continue.



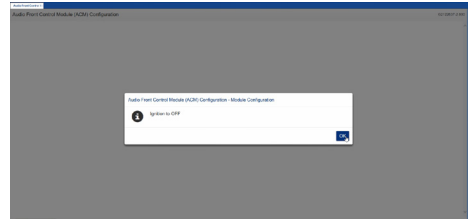
3.3 Click "OK" to continue.



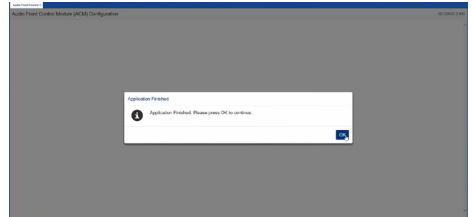
3.4 The ACM Configuration operation is running for around 5 minutes.



3.5 Click "OK" to continue.



3.6 Click "OK" to continue. Note the "ACM - Audio Front Control Module (ACM) Configuration" application is successfully finished.



VII. SPECIFICATIONS

Frequency Response: 50Hz-20kHz

Maximum SPL: 100dB

Power Handling: 100Wx2

Driver Complement: 4 x 4" (100mm) long excursion woofers; 2 x 2" (50mm) Edge-Driven Dome Tweeters

Soundbar Dimensions: (L x W x H): 31.5" x 6.12" x 5" (800mm x 155.5mm x 128mm)

Soundbar Weight: 13.67lbs. (6.2kg)

3-Door Bracket Weight: 3.75lbs. (1.7kg)

5-Door Bracket Weight: 3.53lbs. (1.6kg)

3/5-Door Square Tube Weight: 5.95lbs. (2.7kg)



JBL BB4000 / FORD Model # VM2DZ-18808-J / VM2DZ-18808-K

3 Door and 5 Door Tailgate Speaker system

All Ford Part numbers provided by JBL are warranted an to be free from defects in materials and workmanship on products properly installed per the installation instructions provided with the product. This warranty period covers repair or replacement of any defective product at no charge during the applicable warranty period as noted below. Labor or service of defective product is not paid or reimbursed by Harman International Industries, Incorporated.

WARRANTY PERIOD

	USA	Outside USA
Product which appears on New Vehicle Monrooney Label (window sticker)	Coverage which matches new vehicle warranty: Ford - 3 years or 36,000 miles whichever comes first	Coverage which matches new vehicle warranty: Ford - 3 years or 60,000 kilometers whichever comes first
Part purchased and installed during or after the original vehicle warranty	Whichever of the following options which provides the greater benefit to the customer: 1) 2 years/ unlimited miles, or 2) The remainder of the new vehicle warranty	Whichever of the following options which provides the greater benefit to the customer: 1) 2 years/ unlimited kilometers, or 2) The remainder of the new vehicle warranty

This limited warranty does not cover any damages, defects or malfunction by misuse, abuse, accident, improper installation, modification, or improper lack of maintenance. Incidental and consequential damages are not recoverable under this warranty program. This warranty offers the buyer specific legal rights. You may have additional or other right as which vary from state to state or province.

If you experience a warranty issue with this product, please visit your local Ford Authorized Dealer. If dealer installed and product found to be defective, labor is covered - Ford Warranty Policy - Section 3.

Please note that Harman International Industries, Incorporated has components and parts available to assist consumer and authorized dealers to resolve warranty and non-warranty issues in a timely manner.

Note to Dealer
Ford Dealers should contact Harman International Industries, Incorporated by phone 800-336-4JBL (4525) or by email to: support@jbl.com



HARMAN International Industries, Incorporated
 8500 Balboa Boulevard,
 Northridge, CA 91329 USA
 www.jbl.com

© 2021 HARMAN International Industries, Incorporated. All rights reserved. JBL is a trademark of HARMAN International Industries, Incorporated, registered in the United States and/or other countries. Features, specifications and appearance are subject to change without notice.