



**FORD PERFORMANCE**

**M-19008-BTDP**

**2021**

**Bronco® Off-Road Tubular Doors – Pull Strap/Ferrule Service Kit**

NO PART OF THIS DOCUMENT MAY BE REPRODUCED WITHOUT PRIOR AGREEMENT AND WRITTEN PERMISSION OF FORD PERFORMANCE PARTS © Ford Motor Company 2020

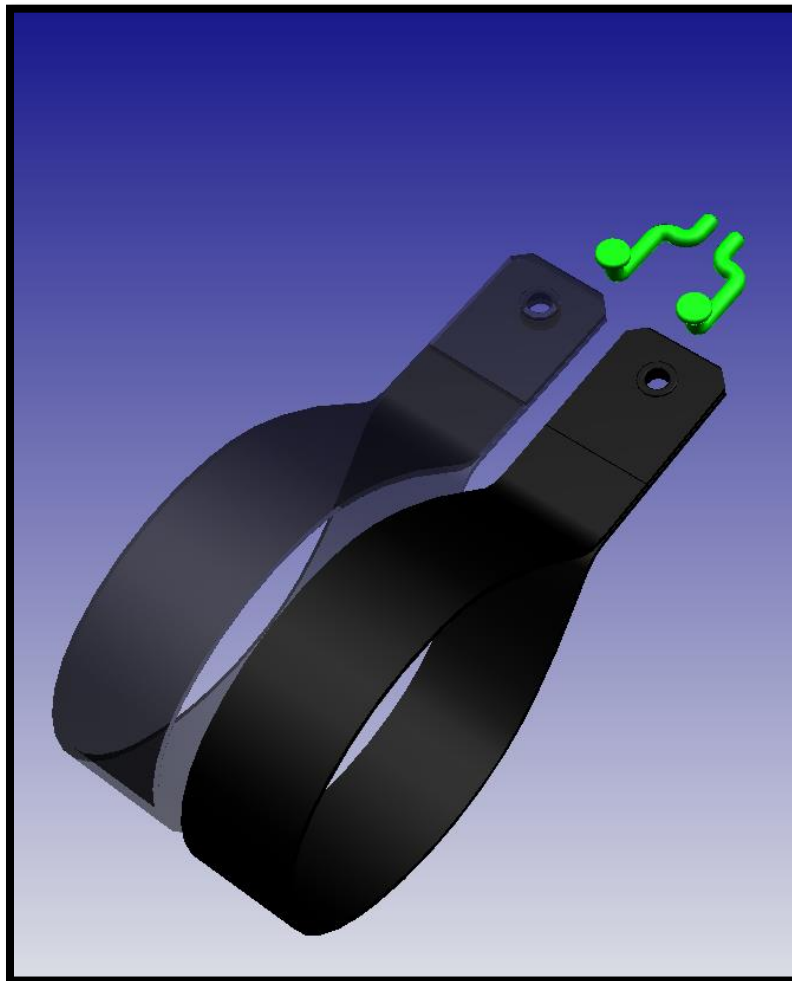
**PRIOR TO INSTALLATION READ THESE INSTRUCTION COMPETELY**  
**For questions, Call the FORD PERFORMANCE Techline 1-800-367-3788**

Please visit <https://www.performanceparts.ford.com> for warranty information

### Kit Contents

#### **Pull Strap & Ferrule Service Kit (M-19008-BTDP)**

- 1 Driver Side Ferrule
- 1 Passenger Side Ferrule
- 2 Pull Strap
- 1 I-Sheet Information Card (not shown)



Ford Factory Shop Manual purchase options [www.motorcraftservice.com](http://www.motorcraftservice.com)



FORD PERFORMANCE

M-19008-BTDP

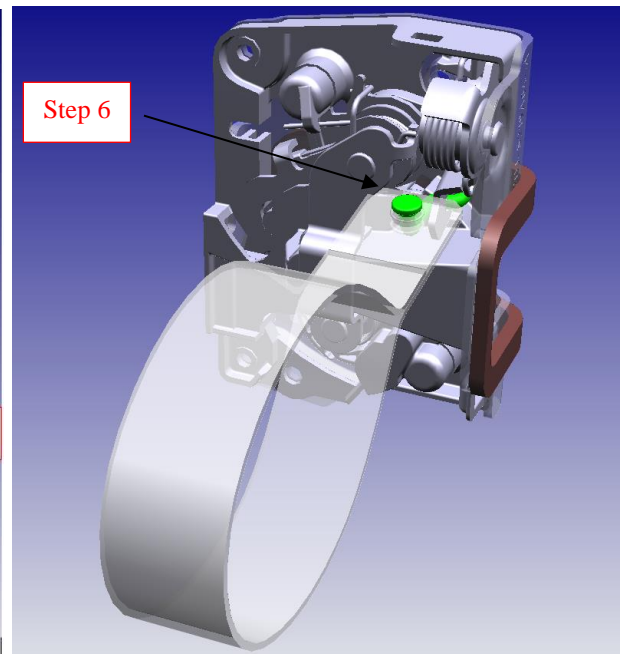
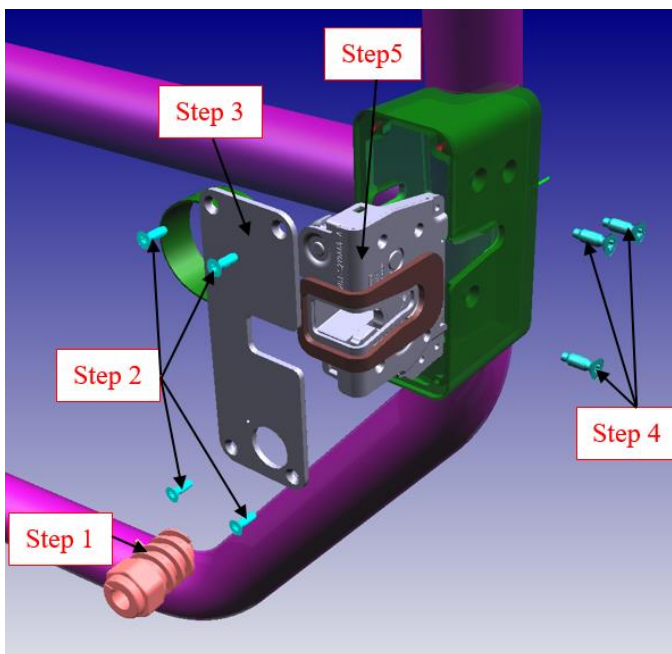
2021

Bronco® Off-Road Tubular Doors – Pull Strap/Ferrule Service Kit

NO PART OF THIS DOCUMENT MAY BE REPRODUCED WITHOUT PRIOR AGREEMENT AND WRITTEN PERMISSION OF FORD PERFORMANCE PARTS © Ford Motor Company 2020

### Pull Strap & Ferrule Installation Instructions

1. Remove door bumper.
2. Remove service cover plate screws.
3. Remove service cover plate.
4. Remove latch mounting fasteners.
5. Remove latch assembly.
6. Remove ferrule and pull strap from latch assembly.
7. Install ferrule and pull strap on new latch assembly.
8. Insert pull strap through latch enclosure hole, align latch to mounting holes, and install latch mounting fasteners.  
*Note: Torque bolts to 8.9 lb-ft (12Nm).*
9. Install service cover plate and fasteners.  
*Note: Torque bolts to 1.8 lb-ft (2.5Nm).*
10. Install bumper assuring the marks are aligned.



Ford Factory Shop Manual purchase options [www.motorcraftservice.com](http://www.motorcraftservice.com)