






Door Handle Cup Protector Installation/User's Manual

- Read the "Cautions for Handling" carefully before using the product and use the product properly.

The important points are displayed with the following labels. Please follow the instructions by all means.

| | |
|--|---|
|  Warning | Instructions you must follow for your safety. [When mishandled, it may cause death or serious injuries.] |
|  Caution | Instructions to follow for safety and to protect your car. [When mishandled, there is a danger that it may lead to injuries or an accident.] |
|  Advice | Points you need to know Handy points to keep in mind |

Warning

- Never alter / modify the product.
- Doing so may damage the product and cause a serious damage.
- Be sure to stop the engine when working with the product to secure safety.
- Install the product securely.

Caution

- Do not use the product on vehicle types other than the applicable ones and for other than the intended purpose.

1. Product number and applicable vehicle types

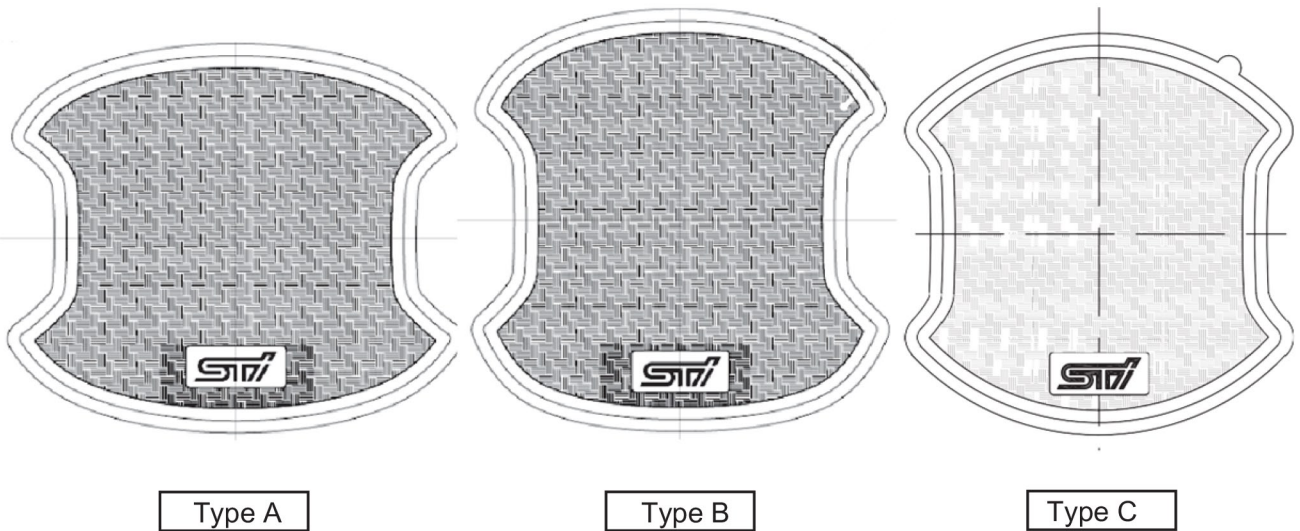
| Product No. | Product Name | Applicability |
|-------------|---|--|
| J1210VA500 | Door Handle Cup Protector Type A | 2015 – 2019 Outback / Legacy – all models 2015 – 2019 WRX/WRX STI – all models 2014 – 2018 Forester – all models 2020 Outback and Legacy – all models |
| J1210FL500 | Door Handle Cup Protector Type B | 2017 – 2019 Impreza – all models 2018 – 2019 Crosstrek – all models 2019 – 2020 Ascent – all models |
| J1210CA500 | Door Handle Cup Protector Type C | 2013 – 2019 BRZ – all models |
| J1210SJ500 | Door Handle Cup Protector Type A (2 pieces) | 2019 Forester – all models |

2. Component parts

① Door Handle Protector × 4 (Type A, Type B or Type C) , ×2 (Type A for BRZ)

② Installation / User's Manual (this document) × 1

* Please verify the quantity first. If there is a missing part please contact your retailer.



3. Tools needed for the installation

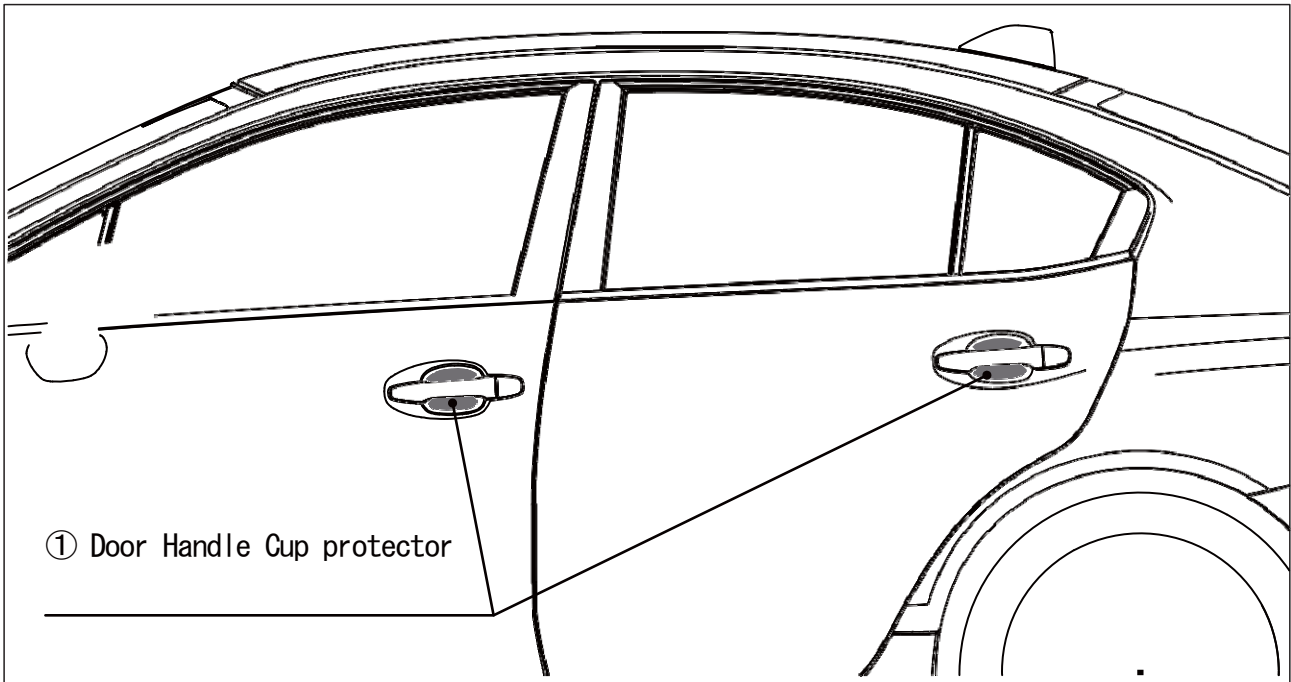
Scissors, a clean lint-free cloth, rubbing alcohol, and a possible hair dryer if ambient temperature is 15°C (59°F) or cooler.



Caution

- (1) Thoroughly clean door handle cup surfaces. Remove any wax prior to installation with rubbing alcohol.
- (2) Dry fit the part first before starting installation. Use this opportunity to check its positioning and overall fit.
- (3) Install the part in a low dust environment. Avoid drafty areas that can circulate debris into the air.
- (4) Perform the work in an environment where the ambient temperature is 15°C or higher (vehicle body and product also). When the temperature is less than 15°C, warm the vehicle body and product to 25 - 50°C with a dryer and the like before performing the work.
- (5) Apply firm pressure after adhering the product to the vehicle.
- (6) Avoid washing the vehicle or getting it wet with rain for 24 hours after installation.
- (7) If chemicals, wax or any type of solvent makes contact with the part, wipe it immediately. Failure to do so may result in permanent staining or blistering of the product.
- (8) Perform the installation with clean hands to avoid compromising the adhesive on the part.
- (9) Prolonged exposure to water may cause the part to turn white. This behavior is normal and will not impact the part's performance and function. The part's color will fully return once it is completely dry.

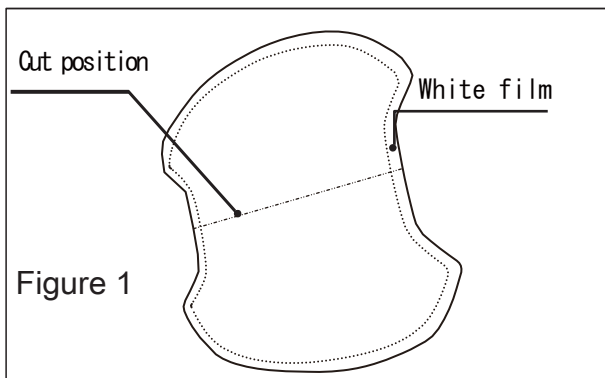
4. Installed view



5. Installation main points

★This document demonstrates the left front side. Perform the work on the other doors similarly.

★Read this document completely to the end and perform the work when you understand the overall work procedure.



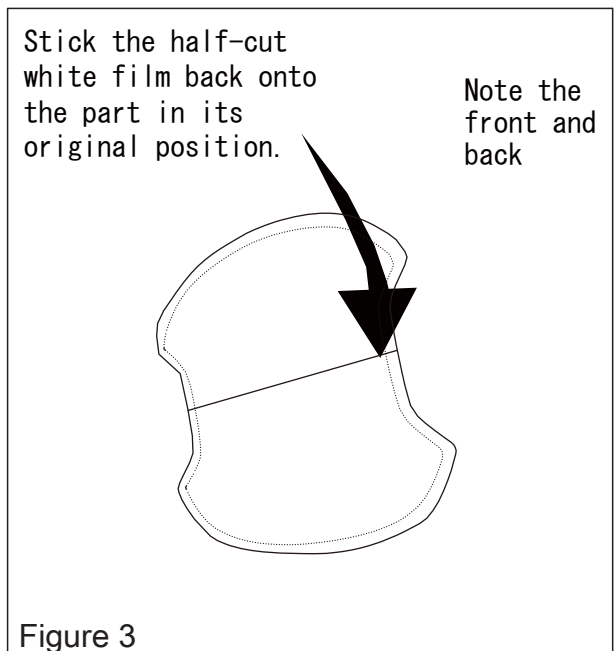
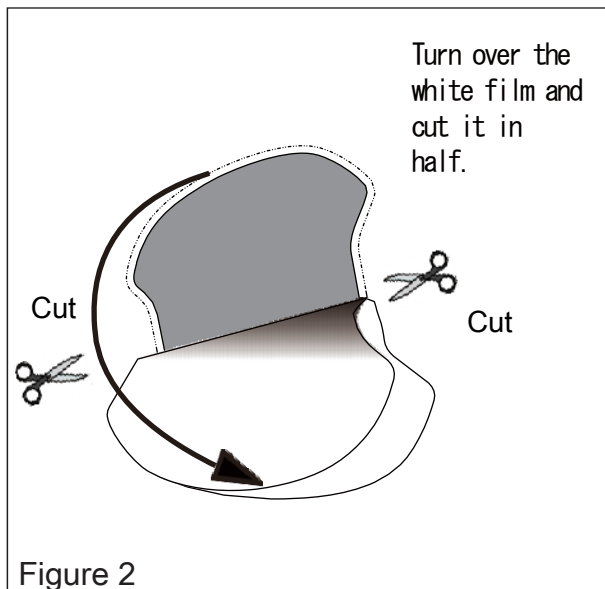
(1) Preparation

1) Divide the white film (release paper) on the back side to upper and lower halves. (Figure 1)

i) Turn over the white film half way. (Figure 2)

ii) Cut the white film with scissors. (Figure 2)

iii) Paste the cut white film back onto the UX\Ygj Y surface. Note which side is front or the back. (Figure 3)



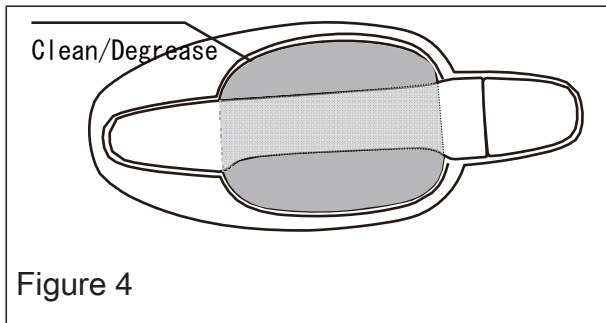


Figure 4

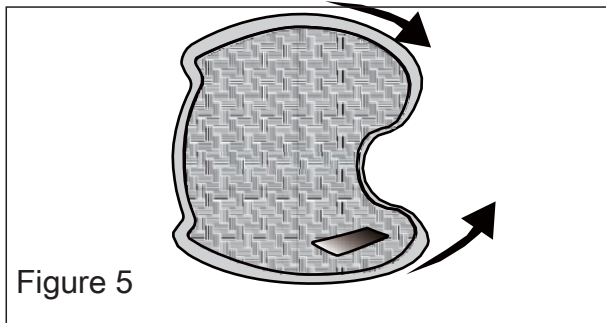


Figure 5

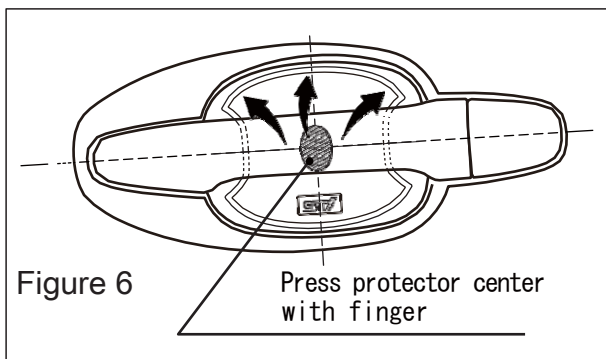


Figure 6

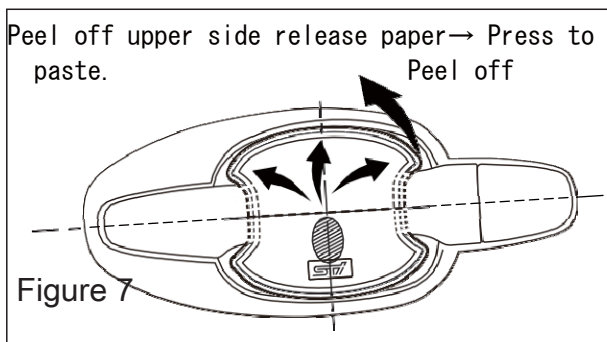


Figure 7

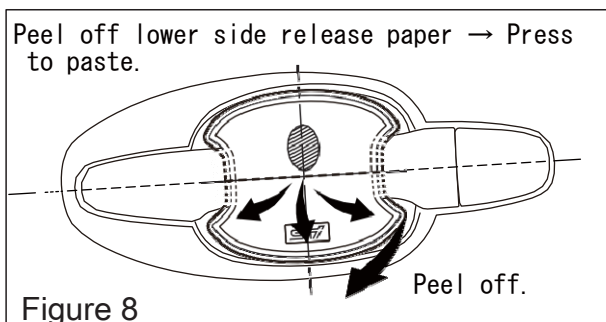


Figure 8

(1) Preparation - continued (Figure 4)

- 1) Degrease / clean the door handle cup surfaces with rubbing alcohol and confirm that there is not residue.
- 2) Check that the temperature is 15°C or higher (both vehicle body and the product).
If less than 15°C, warm the vehicle body and the product to 25 - 50°C before performing the work.

(2) Temporary attaching

- 1) Peel off the clear protective surface film.
- 2) Roll up the protector and apply curvature to it. (Figure 5)
- 3) Position the part within the door handle cup press the central part with a finger and adjust its balance relative to the up, down, front and back of the panel's cone shape and the door handle angle while holding it against the panel. (Figure 6)

(3) Pasting

- 1) When the final position is decided, peel off the upper side release paper. The release paper is divided into upper and lower parts. Hold by pressing a little below the center when peeling the upper side. (Figure 7, slanted line part)
Be careful not to move out of position when peeling. (Figure 7)
- 2) When the release paper is peeled off, paste the product by pressing from the center to outward so that air does not get trapped in.
- 3) Perform the similar procedure with the lower side release paper. (Figure 8)
- 4) Finish by pressing on the entire product.
*Paste by pressing with fingers without using tools.