

2023MY Outback Door Projector Light Port Installation Instructions



Ensure the VIN matches the workorder and the vehicle date is in the lock period and there are no “Holds” on the vehicle for any reason. Ensure the vehicle calls for the accessory installation. Inspect the area where the accessory is to be installed and the vehicle for damages, etc. prior to all work.



P/N: H4610AN100

CAUTION: ACCESSORY INSTALLATIONS PERFORMED BY UNTRAINED PERSONS COULD RESULT IN SERIOUS INJURY TO THOSE PERSONS OR TO OTHERS.

Subaru Work Instructions are intended for use by professional accessory installers ONLY. They are written to provide step by step accessory installation instruction for a fast-paced production environment. Properly trained accessory installers have the equipment, tools, safety instructions and know-how to do the job correctly and safely. Included in this information are the use of “special” accessory installation fixtures and templates that are not available to the Retailers or general public. Please refer to the Retailer Installation Instructions found in Subaru Tech Info System (STIS).

SUBARU OF AMERICA, INC. IS “ISO 14001 COMPLIANT”

The international standard for excellence in Environmental Management Systems. Please recycle or dispose of automotive products in a manner that is friendly to our environment and in accordance with all local, state and federal laws and regulations.



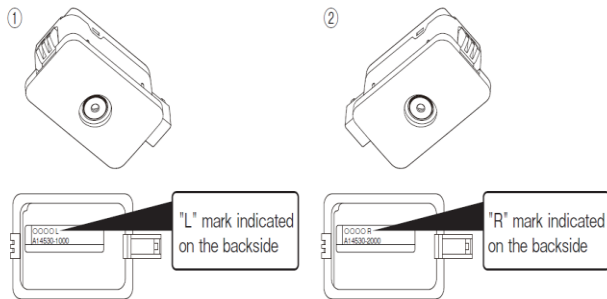
2023MY Outback Door Projector Light Port Installation Instructions

Inspect the Door Projector Light Kit for defects, damage, or missing items.

Kit Contents:

- (1) LH Door Projector Light
- (1) RH Door Projector Light

P/N: H4610AN100



NO.	Part name	Quantity
①	DOOR PROJECTOR LIGHT L	1
②	DOOR PROJECTOR LIGHT R	1

STOP **Stop:** Damage may occur to the vehicle/part. Do not proceed until process has been complied with.

WHA **Work Hazard Analysis (WHA):** Operator safety-Use caution to avoid risk of injury.

! **Caution:** A process that must be carefully observed in order to reduce the risk of damage to the accessory/vehicle and to ensure a quality installation.

|| **Revision Mark/Highlight:** This mark highlights a change in installation with respect to the previous issue.

WIT **Work Instruction Training (WIT):** Key point that designates an important step to ensure the quality of the installation.

♻️ **Recycle:** Item to be recycled.

S **Safety Torque -** This mark indicates that a torque is related to safety

2023MY Outback Door Projector Light Port Installation Instructions

Required Tools and Supplies

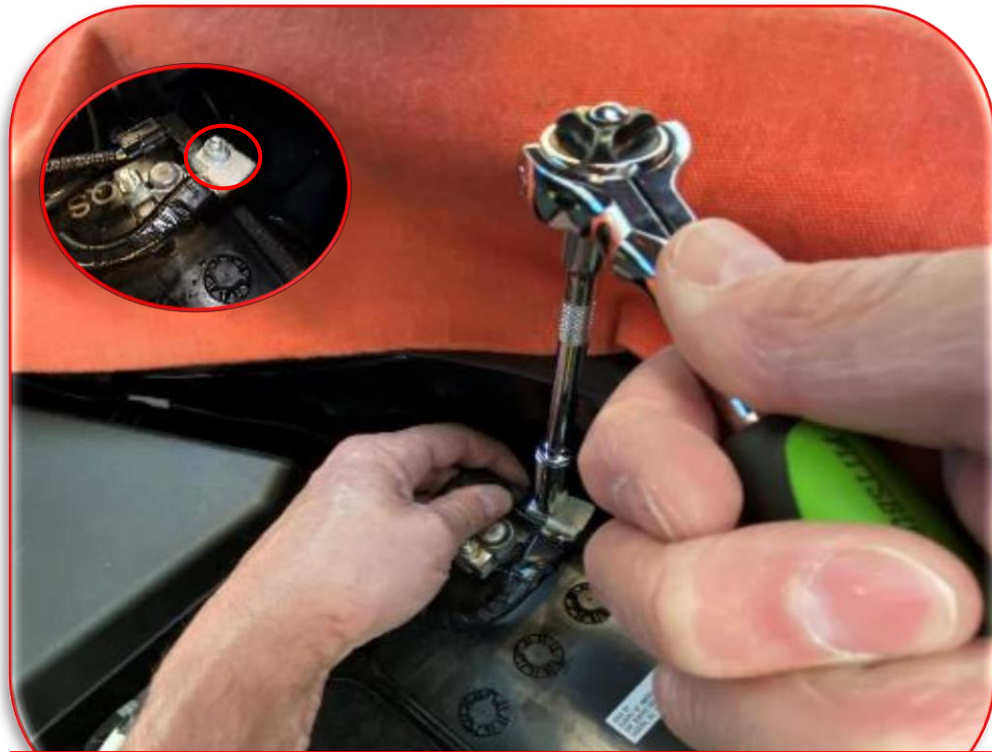
- ¼" Drive Torque Wrench
- ¼" Drive Ratchet
- 10mm Socket
- 6" extension
- **Scotty Peeler (Tool # SPN-1)**
(recommended) or a nylon trim tool
- Torque Marker
- Vehicle Protection


www.scottypeeler.com

Scotty Peeler™
Tool P# SPN-1.




2023MY Outback Door Projector Light Port Installation Instructions




While disconnecting the negative battery cable from the stud, hold the battery sensor in place with one hand while loosening the 10mm hex nut that secures the cable to the sensor. This will help support the sensor to prevent damage and also prevent the assembly from rotating on the battery post causing a poor connection. 

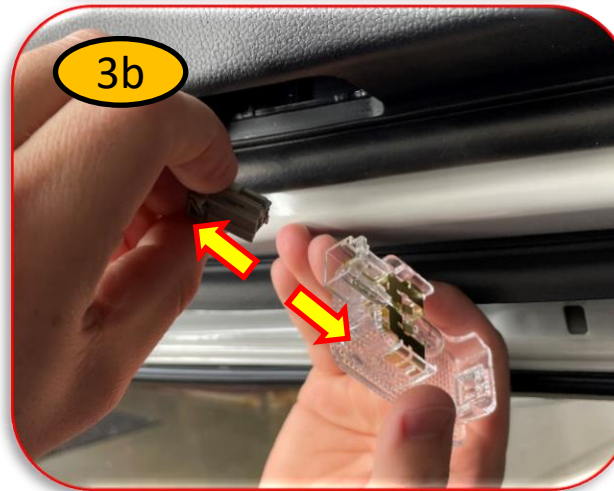
Open the hood and use the prop rod to hold the hood in the open position. While holding the battery sensor in place with one hand, use a ¼" drive ratchet and 10mm socket to remove the negative battery cable from the negative battery stud. Do not remove negative cable from the battery post. Position / protect the negative cable so it cannot accidentally touch body ground or the negative the battery terminal. Allow (60) seconds before the next installation step to ensure the airbag power supply is discharged.

 Carefully remove the negative battery cable from the battery stud only. Do not allow the negative cable accidentally ground during the installation.

2023MY Outback Door Projector Light Port Installation Instructions

Preparation

1. Open the LF door to the fully open position.
2. Using a scotty peeler tool (recommended) or a nylon trim tool, carefully remove the door entry light assembly by inserting the scotty peeler tool on the front side of the light housing (closest to the door speaker) and gently pry downward.
3. Disconnect the O.E. door entry light and properly dispose. 



2023MY Outback Door Projector Light Port Installation Instructions

Installation

1. Confirm you have the correct left-hand or right-hand Door Projector Light.
 2. Note: The Door Projector Lights will have "OB UL" or "OB UR" on the backside of the part.
"UL" = Left **"UR" = Right**
 3. Carefully connect the left-hand door entry light connector into left-hand Door Projector Light assembly. Confirm proper connection with "push-pull-push" method.
 4. Carefully feed the Door Projector Light harness/connector end into the door pad opening.
 5. Fully seat the Door Projector Light assembly.
 6. Ensure the door weatherstrip is not pinched by the Door Projector Light assembly.
 7. Fully close the left front door.
- Repeat procedure on opposite side for RH Door Projector Light.



2023MY Outback Door Projector Light Port Installation Instructions



While connecting the negative battery cable to the stud, hold the battery sensor in place with one hand while torquing the 10mm hex nut that secures the cable to the sensor. This will help support the sensor to prevent damage and also prevent the assembly from rotating on the battery post causing a poor connection. ⚠️

Re-connect the negative cable by reinstalling the saved 10mm nut on the stud. Use a ¼" drive torque wrench and a 10mm socket, tighten the cable nut to 66 In. Lbs. while holding the sensor to prevent damage and prevent the assembly from rotating on the battery post.

Carefully reinstall the negative battery cable to the battery stud only. Do not allow the negative cable accidentally ground during the installation. ⚠️

Torque mark the battery stud ⚠️



2023MY Outback Door Projector Light Port Installation Instructions

Check Your Work Validation

- ✔ Ensure both Door Projector Lights are fully seated in place.
- ✔ Ensure the door weatherstrip is not pinched between the door pad and the Door Projector Light assemblies.
- ✔ Ensure no scratches or gouges on the door panel surfaces where the Door Projector lights were installed.
- ✔ Ensure the Door Projector Lights properly illuminate and are correctly oriented when the front doors are opened.
- ✔ Ensure proper function of the auto-window feature.

2023MY Outback Door Projector Light Port Installation Instructions

Left Front Door Projector Light Proper Orientation



Right Front Door Projector Light Proper Orientation



2023MY Outback Door Projector Light Port Installation Instructions

Document History

<u>Revision</u>	<u>Date</u>	<u>Slide#</u>	<u>Description</u>	<u>Author</u>
A	811/2022	N/A	Original Release	CR