

## Front Lower Control Arm Bumper Package Installation (ZR2 Front Jounce Instruction ID: 87846335)

### Installation Instructions Part Number

87846335

#### Parts Included with Accessory Kit

Description	Quantity
Left Hand Bracket	1
Right Hand Bracket	1
M10 x 1.5 x 110 Bolt	6
M10 x 1.5 Nut	6
Jounce Shock	2
Domed Shock Foot	2
Instruction sheet	1

© 2024 General Motors. All rights reserved.

The parts listed in this catalog are intended for installation in competition vehicles for operation in Off Road racing applications only. By "competition vehicles," GM means vehicles (i) used exclusively for competitions organized and sanctioned by a local or private body and (ii) not designed for use on public streets or highways. Consumers are strongly advised not to install parts accompanied by this warning on vehicles that will be driven on public roads. They have not been designed or tested for crashworthiness or to meet the safety needs of the motoring public, and they may not meet the full durability requirements that Chevrolet validates for its street legal, production vehicle components.

US. federal and state, and Canadian law prohibit an automobile manufacturer or dealer from removing, modifying or rendering inoperative any part installed on a motor vehicle in compliance with an applicable Federal Motor Vehicle Safety Standard. Further, US. federal and state, and Canadian law prohibit any person from knowingly removing, modifying, or making inoperative, or causing someone to remove or render inoperative, or otherwise tampering with, any part or element of design installed in compliance with motor vehicle emission standards on a motor vehicle or non-road vehicle, or otherwise modifying any required emission and noise control system.

Unless specifically noted to the contrary herein, vehicles equipped with Chevrolet Off Road Racing Parts may not meet Federal Motor Vehicle Safety Standards and should not be operated on public roads. Installation or use of these parts on a vehicle operated on public streets or highways is also likely to violate U.S., Canadian, and state and provincial laws and regulations relating to motor vehicle emissions. US. federal and state, and Canadian provincial agencies have the authority to administer substantial monetary penalties against individuals and companies who do not comply with these laws. Chevrolet Performance customers are responsible for ensuring their use of Chevrolet Off Road Racing Parts complies with applicable federal, state/provincial and local laws, regulations and ordinances, and for ensuring that modified vehicles are operated in a manner that complies with applicable laws.

The use of these components in a GM vehicle may adversely affect the original intended performance or handling characteristics of the vehicle. These parts are designed and intended to be used with experts supervising their installation and use, to help assure the proper and safe operation of the vehicle. Use of certain Chevrolet Off Road Racing Parts may result in the failure of other components or systems, which would not be covered under the New Vehicle Limited Warranty. For Off Road Racing Parts in this catalogue designated with an asterisk (\*), installation of such parts may void part or all of the New Vehicle Limited Warranty; these components are warranted against defects in workmanship or materials for 12 months / unlimited miles for parts only. Otherwise, vehicles do retain their New Vehicle Limited Warranty coverage with Chevrolet Performance components installed by an authorized GM Dealer or qualified Independent Service Center.

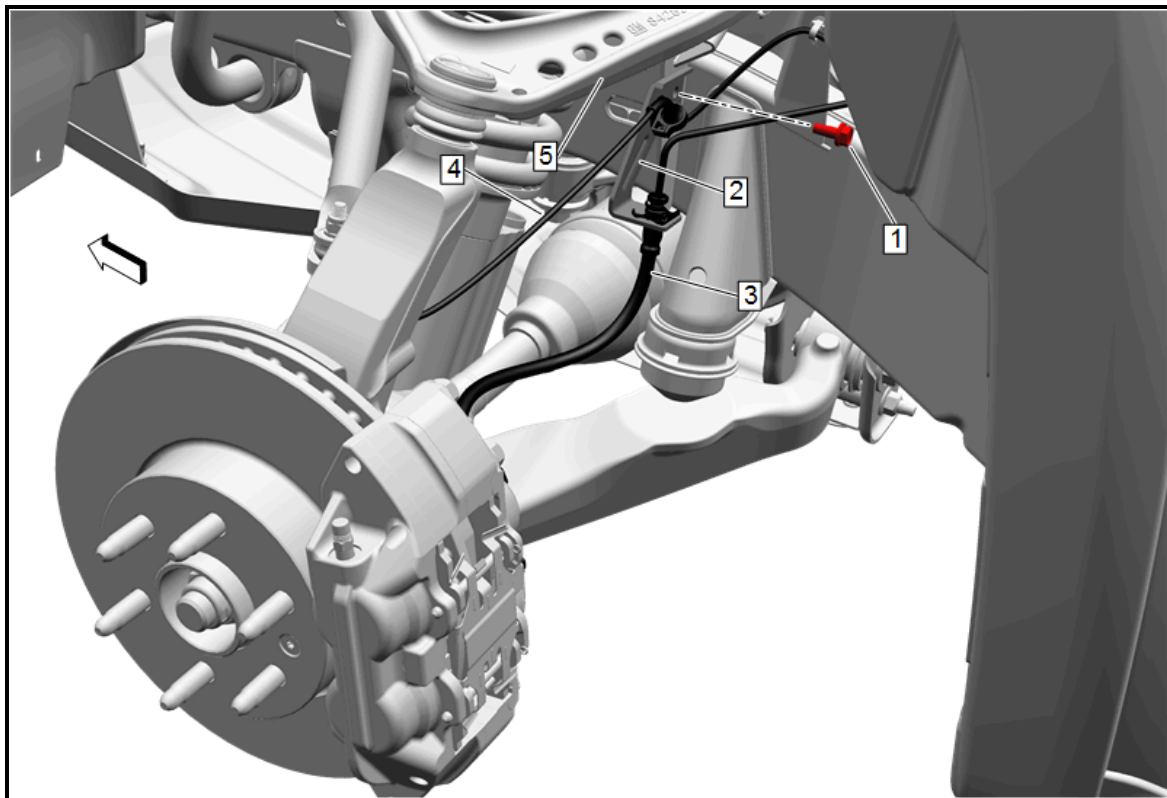
## Tools Required

- Drill and 1/2 Inch Drill Bit
- 1/4 Inch Pin Spanner Wrench
- Metal Cutter/Grinder
- Medium Thread Locker – P/N 19333511
- Black Chassis Paint

## Preliminary Procedure

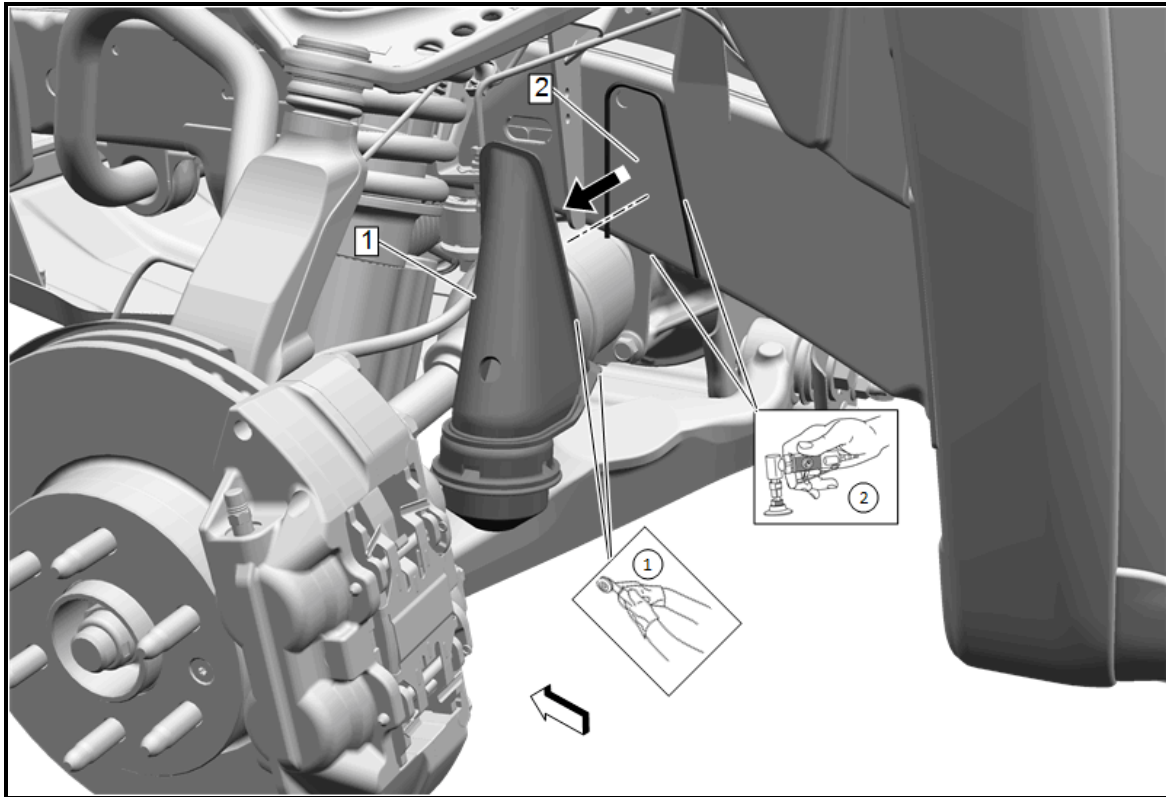
1. Raise and support the vehicle. [Lifting and Jacking the Vehicle](#) in Vehicle Service Manual.
2. Remove the front wheel and tire assemblies. Refer to [Tire and Wheel Removal and Installation](#) in Vehicle Service Manual.

## Procedure

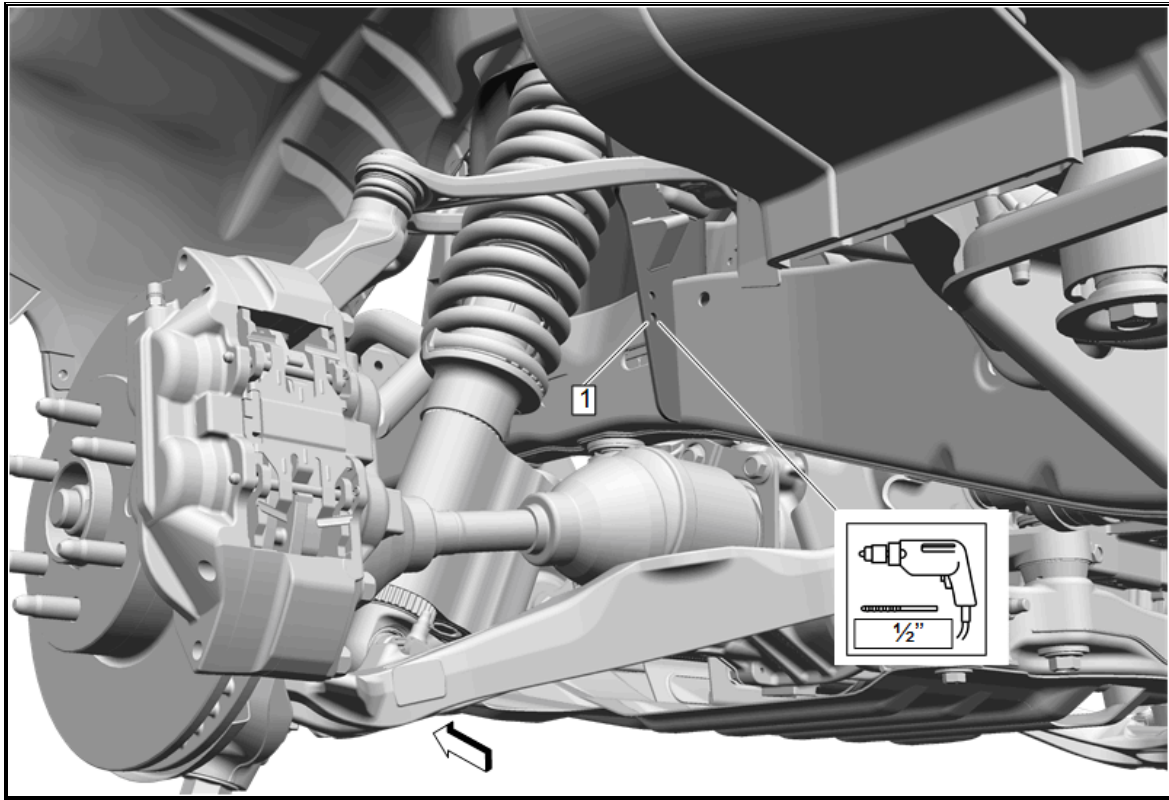


1. Remove the M8 Bolt (1) that holds the Brake Line Bracket (2) to the front shock tower.

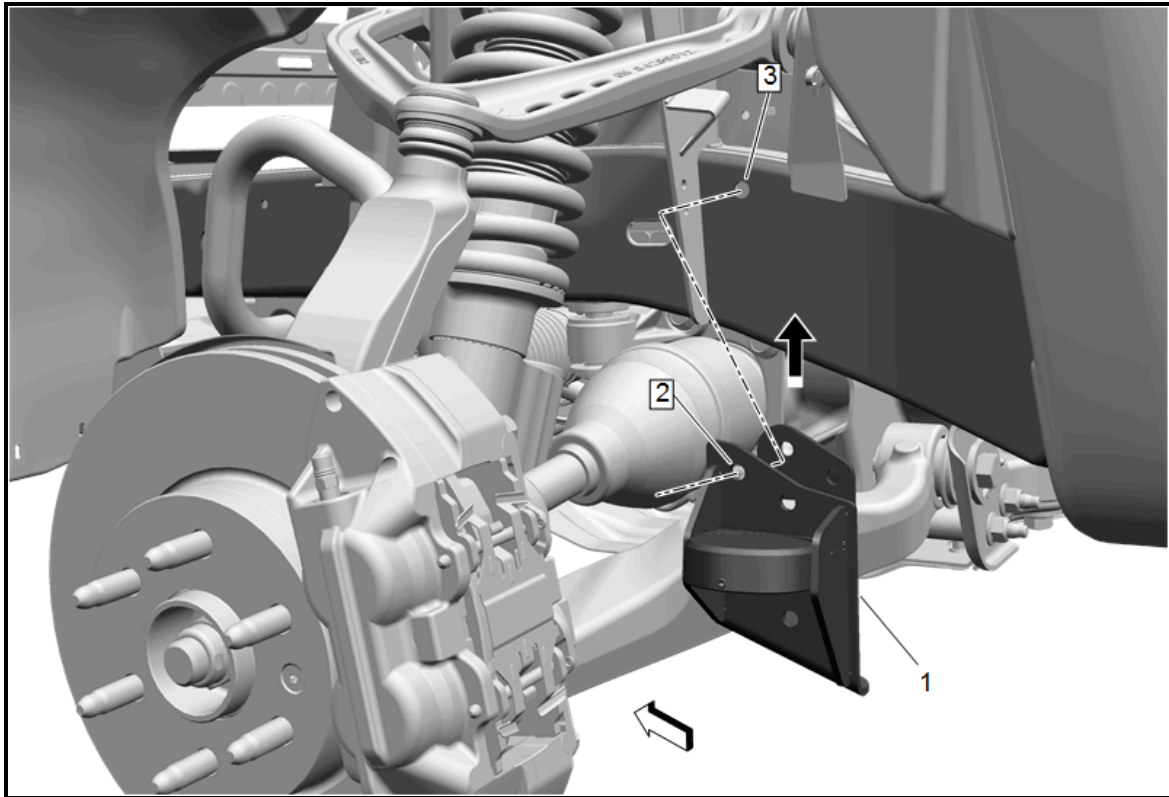
2. Lift the Brake Line Bracket (2), ABS Sensor Wire (4) and Brake Line (3) up to the Upper Control Arm (5) and loosely tie them together.



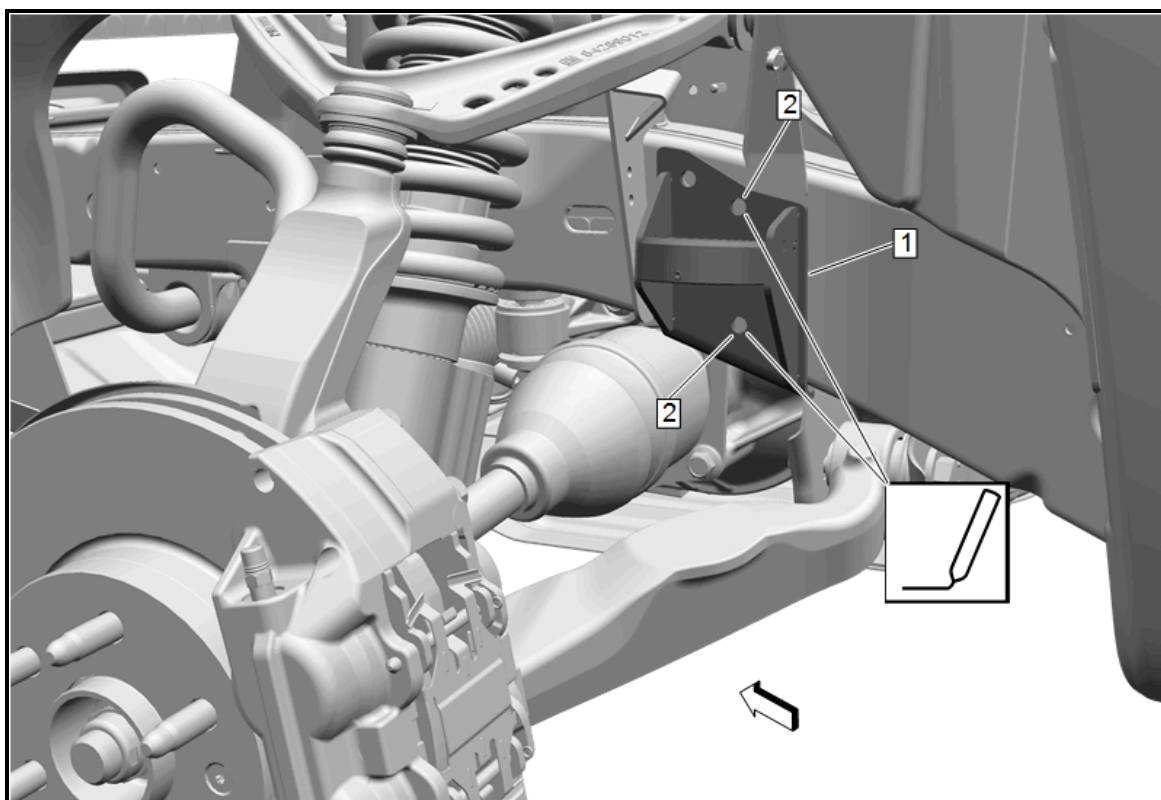
3. The stock Jounce Bumper and Bracket (1) will need to be removed from the frame (2). This requires the bracket to be cutoff and the welds ground flush with the frame.
4. Apply Chassis Black Paint to the frame (2) to seal the bare metal created by removing the Jounce Bumper and Bracket.



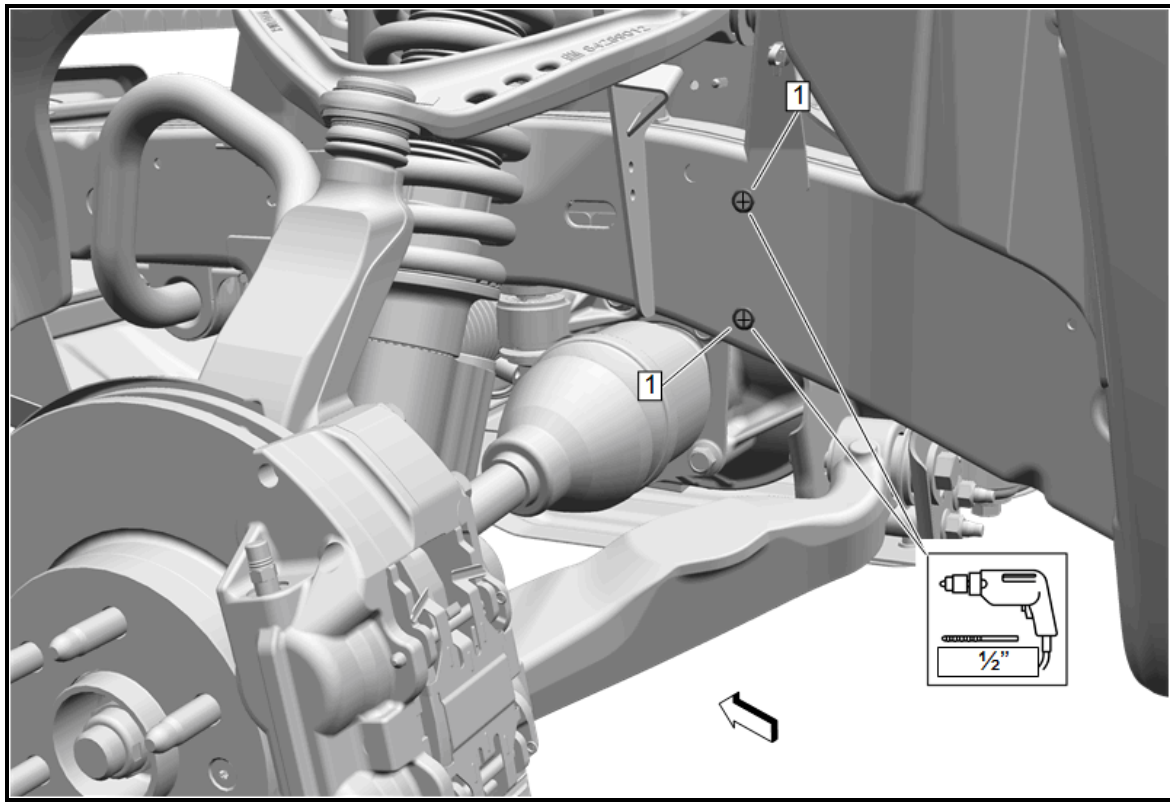
5. Use a 1/2 inch drill bit and drill out the lower hole (1) in the Shock Tower.



6. Position the Left Hand Bracket (1) on the frame by aligning the hole in the bracket (2) and the frame (3). Ensure the bottom of the bracket is pushed up against the frame.

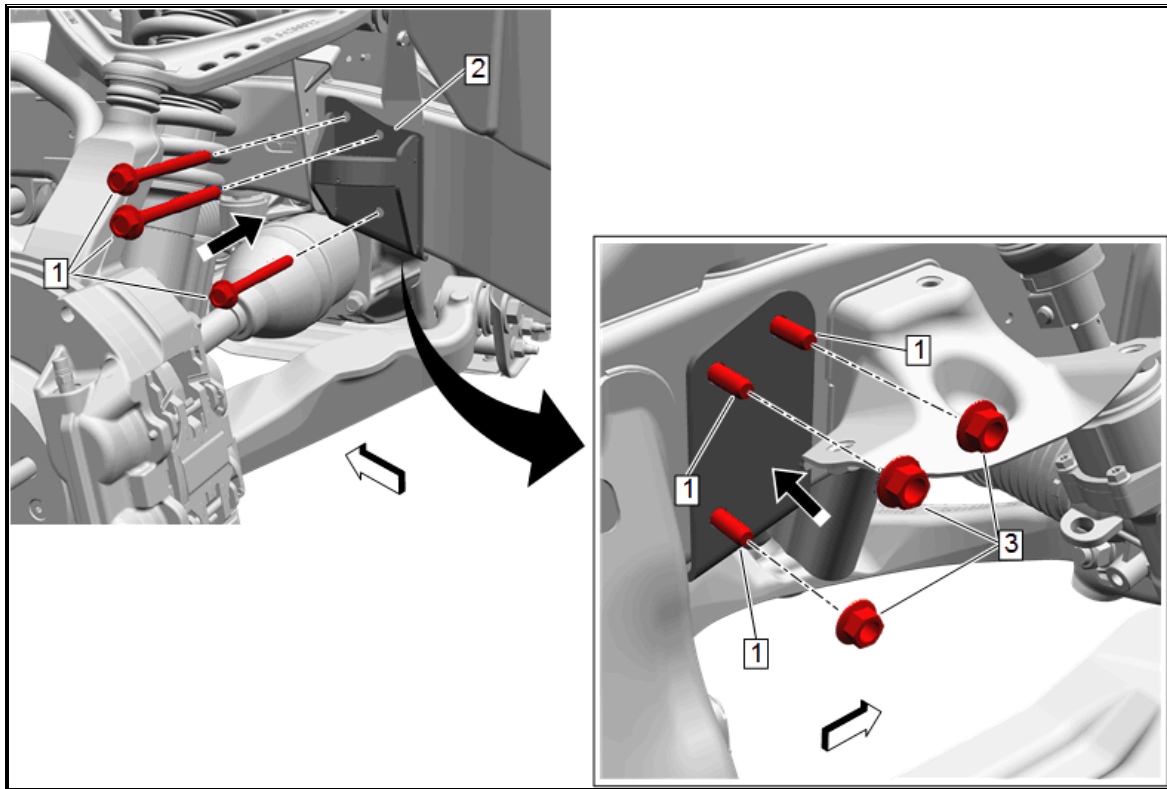


7. Mark the Left Hand Bracket holes (2) on the frame.
8. Remove the Left Hand Bracket (1) from the frame.



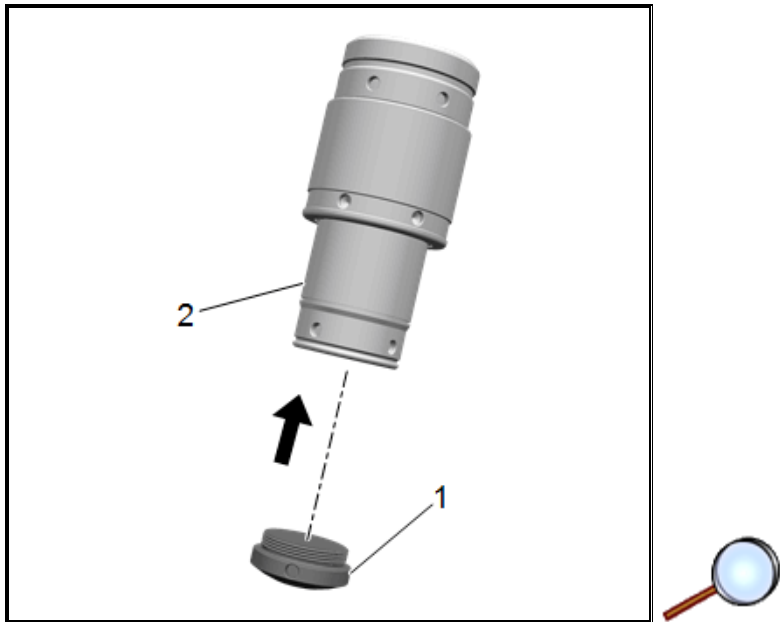
**Caution:** Always check scale, size and position of all templates before drilling. Failing to do so may cause damage to the vehicle, misalignment of components or the inability to install the accessory.

9. Using the marks (1) made in Step 7 and drill 1/2 inch holes straight through both sides of the frame.

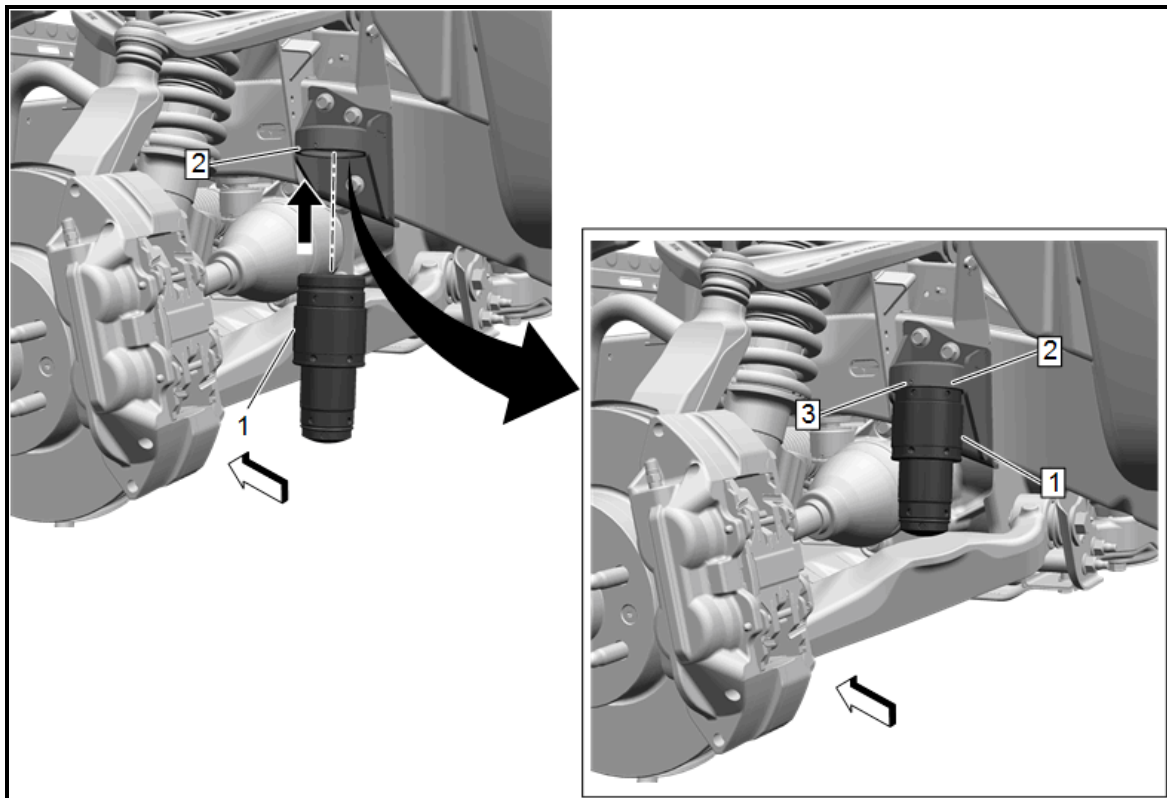


**Caution:** Use the correct fastener in the correct location. Replacement fasteners must be the correct part number for that application. Fasteners requiring replacement or fasteners requiring the use of thread locking compound or sealant are identified in the service procedure. Do not use paints, lubricants, or corrosion inhibitors on fasteners or fastener joint surfaces unless specified. These coatings affect fastener torque and joint clamping force and may damage the fastener. Use the correct tightening sequence and specifications when installing fasteners in order to avoid damage to parts and systems.

10. Position the Left Hand Bracket (2) on the frame and insert the bolts (1) through the frame and bracket.
11. Install the nuts (3) and torque them to 58 N.m (43 lb ft).



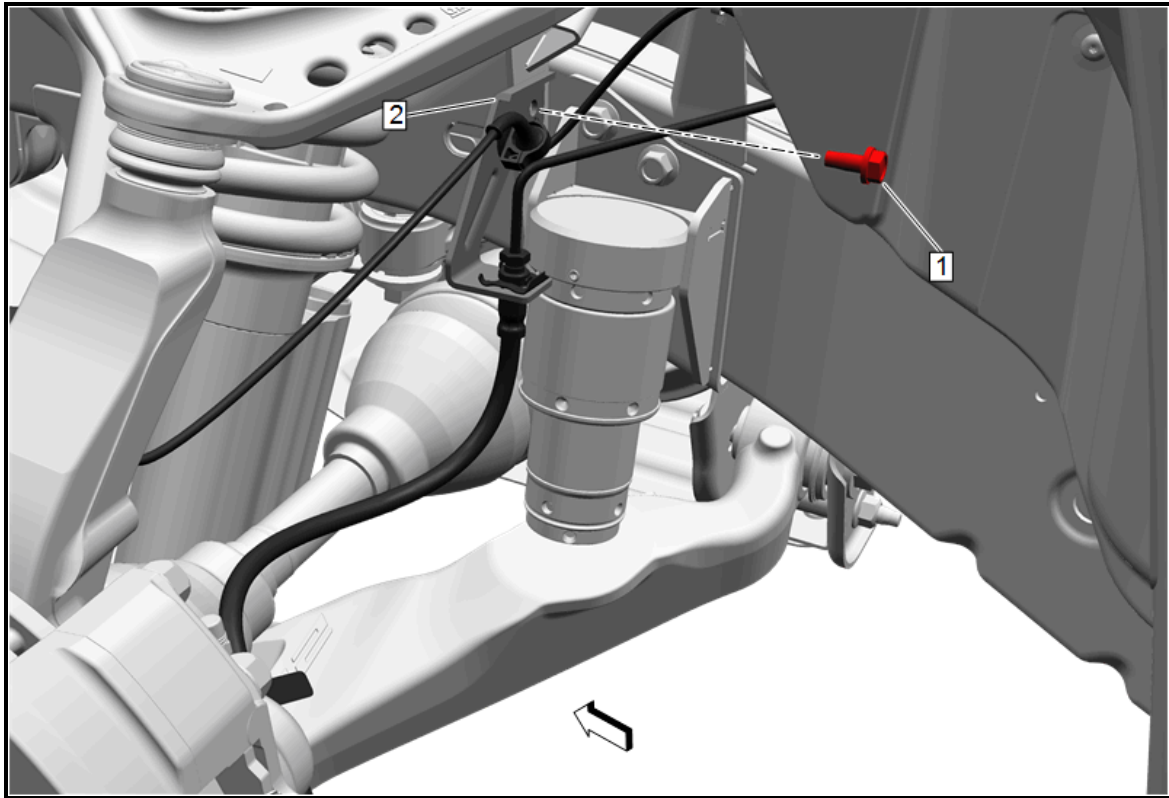
12. Install the Domed Foot (1) to the Jounce Shock (2) by threading it into the base.



13. Thread the Jounce Shock (1) into the Left Hand Bracket (2) until it is fully seated. Use the 1/4 Inch Pin Style Spanner Wrench on the top holes, to tighten the Jounce Shock (1) into the Left Hand Bracket (2).

14. Apply thread locker to the set screw (3) and tighten to 9 N.m (80 lb in).





15. Reinstall the M8 bolt (1) that holds the Brake Line Bracket (2) to the Shock Tower. Rotate the Brake Line Bracket (2) away from the frame before tightening the bolt. The 1/2 inch hole created in Step 5 will allow the bracket to rotate out of the way of the Jounce Shock and Bracket.
16. Repeat these steps for the right hand Jounce Shock.
17. Install the front wheel and tire assemblies. Refer to [Tire and Wheel Removal and Installation](#) in Vehicle Service Manual.
18. Lower the vehicle.

#### **Additional Notes**

**Note:** This kit includes Domed Feet for the Jounce Shock that are made out of Delrin. Replacement Domed Feet are available from SPC Technologies in three different materials if a change in dexterity or noise is desired.

**25605** - 90A Rubber Quiet Ride, Shorter Life

**25602** - Delrin Mid-Range Ride, Long Life

**25604** - UHMW Harsher Ride, Extremely Long Life